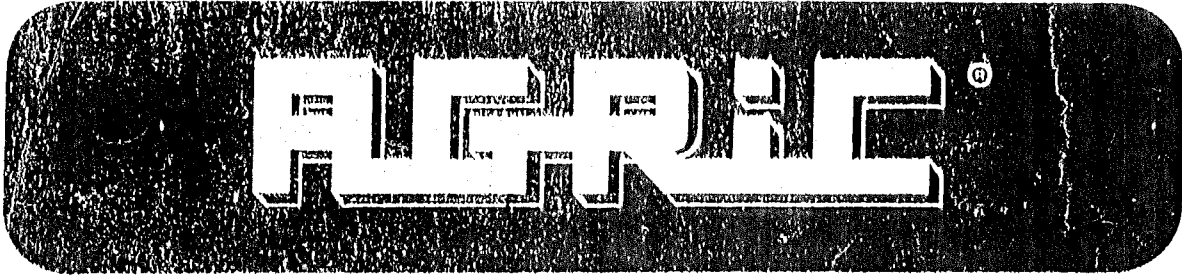
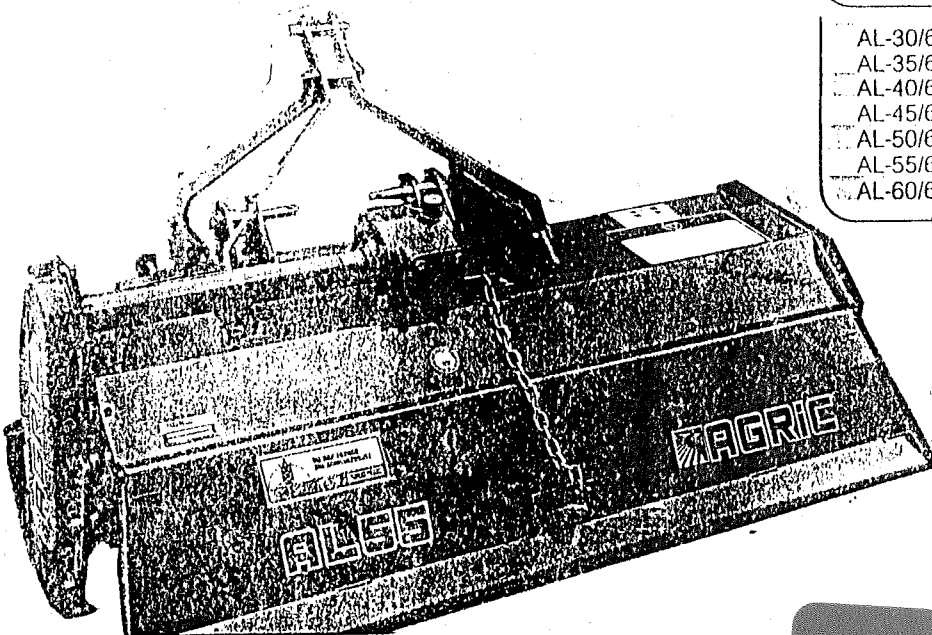



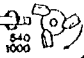


REPAIR PARTS LIST
ASSEMBLY AND OPERATING INSTRUCTIONS



ROTOCULTIVATOR



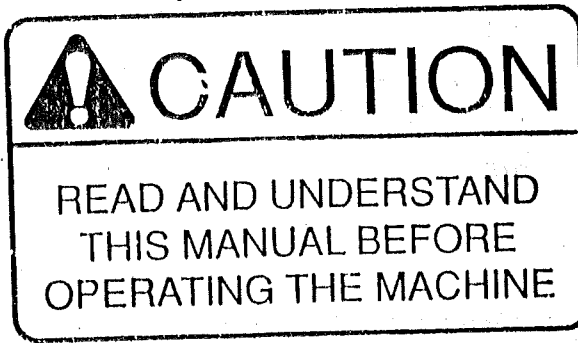
MOD			HP			
AL-30/6	0,76	154	340	12-15	18	182
AL-35/6	0,90	162	357	15-17	21	182
AL-40/6	1,04	170	375	17-20	24	182
AL-45/6	1,15	178	392	20-22	27	182
AL-50/6	1,30	186	410	22-25	30	182
AL-55/6	1,40	194	428	25-30	33	182
AL-60/6	1,50	203	447	27-30	36	182

- Chain driven.
- Working depth (5 - 6").
- Category I hitch bolts.
- Single-speed-gearbox.
- Depth control by skids.
- PTO without clutch.
- Optional rotorspeed 215 r.p.m.
- Blade model 10 - 10C.
- Accessories: Torque limiter, Slip clutch.

CHECK GEAR BOX OIL
BEFORE USE!!!



World Agritech Corporation
The International Line of Machinery
2896 State Route 232, Bethel, Ohio 45106



Read all decals on machines regarding safety procedures.

Read this book and make special note on safety features before mounting the machine to the tractor or before running the machine either static or in work.

Should any warning sign on a machine be lost or become unreadable it will be replaced free of charge on request.

When ordering parts please quote, part number, and machine serial number.

SAFETY PRECAUTIONS



- The safety of the operator should be of prime consideration.



- Allow only trained personnel to use power equipment.



- Do not adjust, repair or grease rotary tiller with tractor engine or PTO running.



- Do not leave machine raised when tractor is stopped.



- Beware of loose clothing that could catch in moving parts.



- Ensure that all safety guards are fitted to cover universal drive joint at both ends.

When driving out of a ditch, gully or up a steep slope, engage clutch slowly...be prepared to de-clutch promptly if the front wheels rise off the ground. For complete safety, lower rotary tiller to ground and let it roll free on its blades behind tractor until crossing of gully or slope is accomplished. When approaching end of work, always raise rotary tiller, as forward turning blades may keep tractor moving ahead if engine is de-clutched and rotary tiller is still turning in the soil.

Do not operate your machine with missing blade bolts.

INSTRUCTIONS FOR USE

MOUNTING THE ROTARY TILLER TO TRACTOR

When the rotary tiller has been attached to the three points of the tractor, it should be as follows:

With the tractor standing on flat ground and the tiller resting on the cutting blades or runners, the end transmission gearbox or cover should be approximately perpendicular to the ground and the universal joint shaft (clutch transmission) should be approximately horizontal or sloping slightly towards the tractor power take-off.

To attain this position, the three holes in the rotary tiller coupling and the turnbuckle on the third attachment point are provided. Therefore, use the pin attached to all the rotary tiller couplings to fix the hydraulic unit arms to the hole best providing the position described above which is, as indicated, with the end transmission box approximately perpendicular to the ground.

Once the rotary tiller has been attached as described above, check the male and female halves of the PTO shaft maintain a clearance of at least 1 1/2".

In this position, check that the splined male and female sections of the PTO do not bottom out; there should be a clearance of at least 1/2".

The rotary tiller must never be operated with the tractor hydraulic lift arms in the uppermost position or the PTO U-joints at an angle greater than 15 degrees.

Read carefully the recommended H.P. for these type of machines.

LUBRICATION

Before starting the machine for the first time and every day thereafter, check the oil level (SAE-90) in both gearboxes. Check the upper one with the dipstick attached to the filter plug, whereas in the side gearbox, the oil should reach the plug located about 6" from the bottom. At the top of side cover there is a threaded plug for filling and the lower plug is for checking the level. Lubricate the two fittings in the center of the universal joint crosses with a pressure gun, until the grease oozes out from the four bearings in each of them. This operation should be effected twice during each working day. The zerk on the right hand end bearing of the tiller rotor, must also be lubricated daily.

These are the only lubrication area's.

STARTING

Before starting to work, lower the hydraulic unit so that the cutting blades are about 8" from the ground. Then set the rotary tiller running at the same time as the tractor starts to drive forwards, gently lower the tiller until it bites into the ground to the required depth.

At the end of the plot, do not stop the tractor but raise the tiller slightly so that the cutting blades do not touch the ground when turning the tractor.

REPLACEMENT OF CUTTING BLADES

Since the cutting blades are mounted in a special spiral way, to avoid mistakes we recommend they be replaced one by one.

It is not desirable to mingle new blades with old ones, since this affects the normal operation of the tiller. Therefore, when any replacement is required, all blades on the rotor should be changed at the same time. Nevertheless, since all the cutting blades do not wear at the same rate, the ones in best condition may be kept for replacement of the more worn ones. In this way, the best use is obtained from all of them.

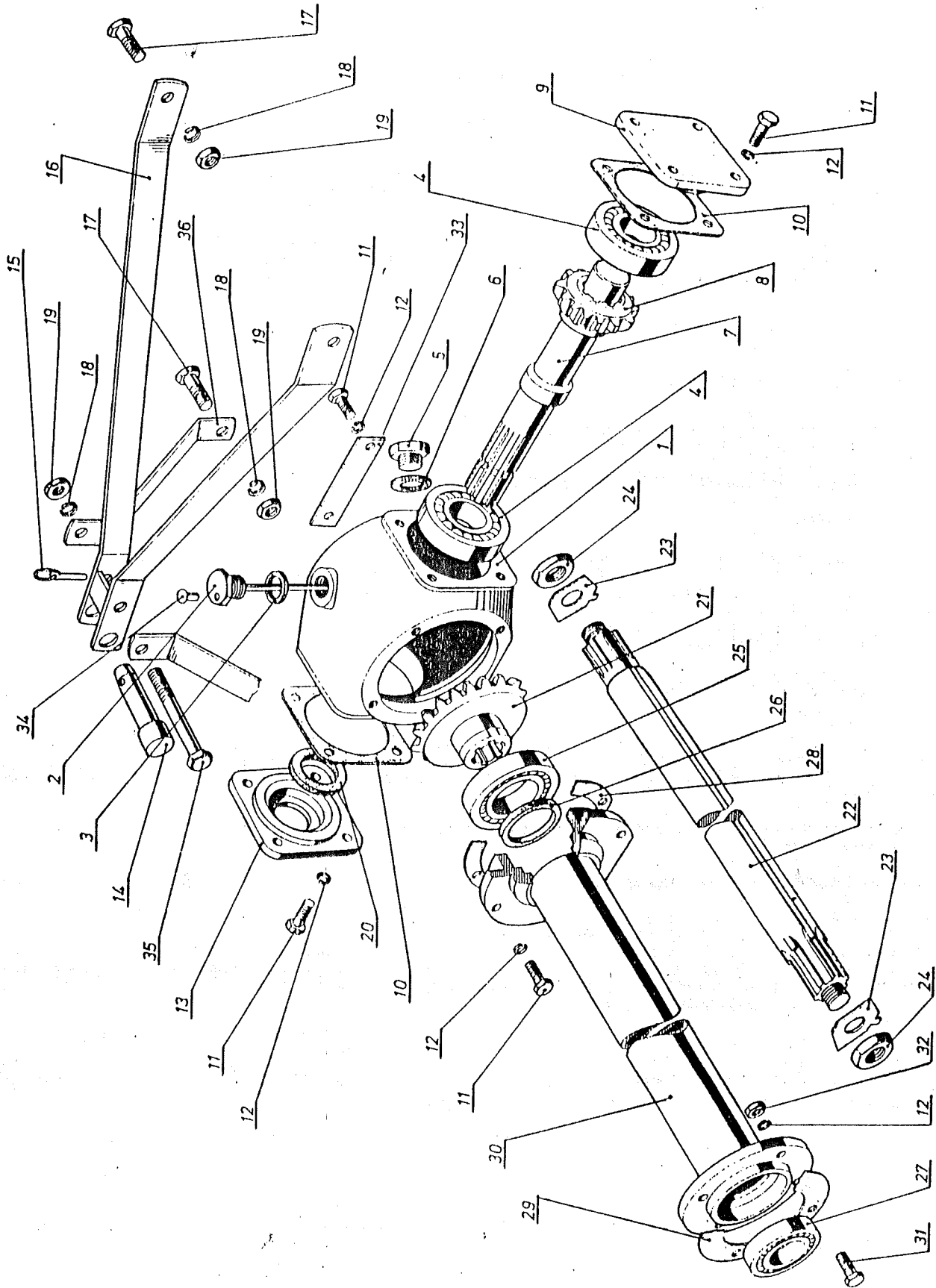
MAINTENANCE

After the first five hours running, retighten all tiller nuts and bolts, particularly the cutting blades bolts. This operation should be repeated periodically and the blades should be checked every day before work starts.

If any of the cutting blades are bent during operation, we recommend it being bent back to the correct position.

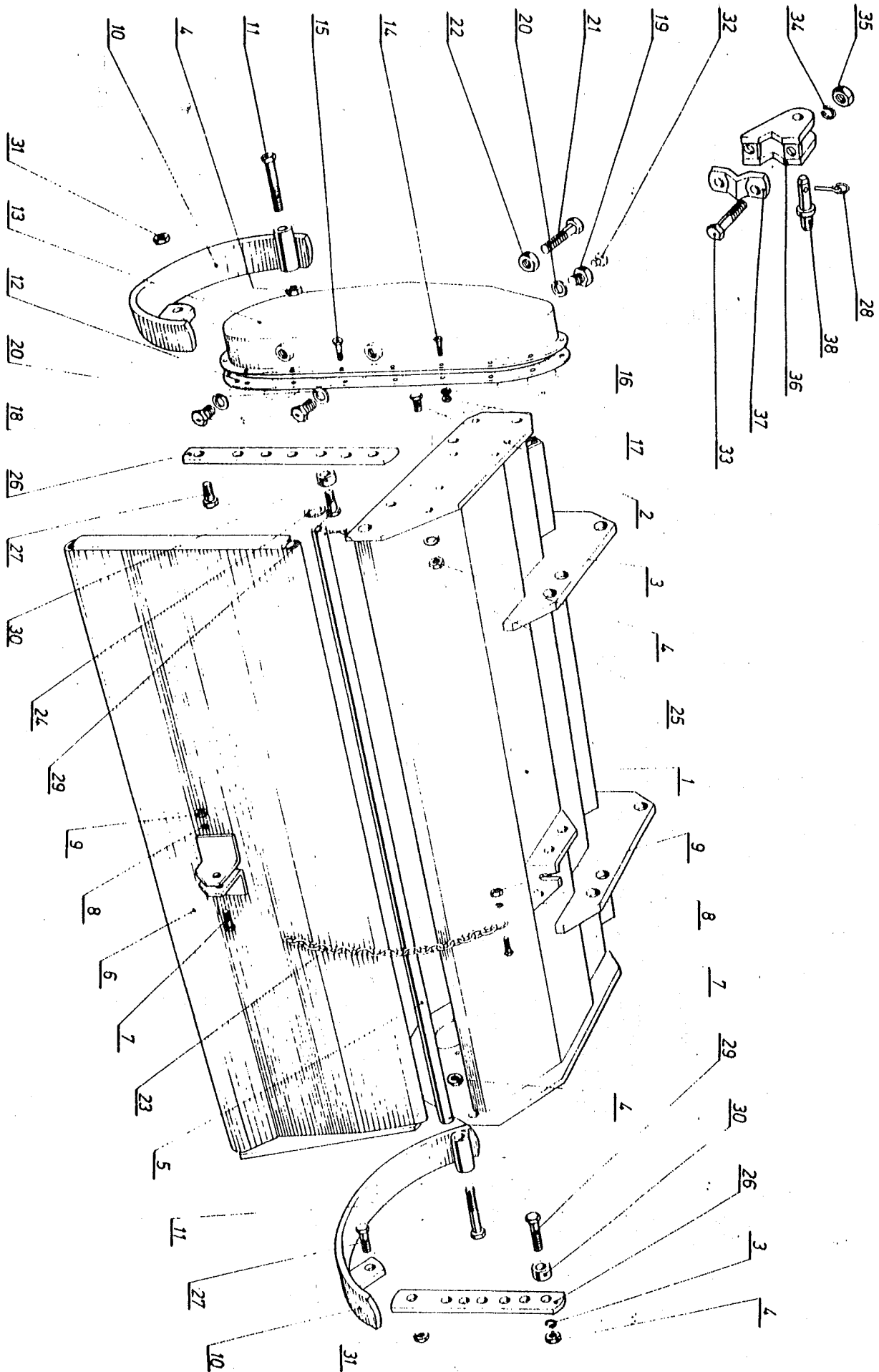
CLEANING

Thorough cleaning of the tiller is also very important and we recommend that, if possible, it should be hosed down with a power hose after every day's work, or otherwise cleaned in the best possible way.



ITEM NO.	PART NO.	DESCRIPTION	QTY.
1	201-AL	Housing	1
2	202-AL	Oil Filler Plug, 3/8 Gas	1
3	227-AL	Washer, 5/8"	1
4		Bearing, 35 x 80 x 21 (6307)	2
5	417-AM	Oil Drain Plug, 3/8 Gas	1
6	226-AM	Washer, 3/8"	1
7	206-AL	Input Shaft	1
8	211-AL	Pinion Gear, 10 Z	1
9	213-AL	Rear Cover Plate	1
10	220-AL	Gasket, 1mm	2
10	220-AL-1	Gasket, 0.5mm	-
11		Hex Bolt, M-10x25	14
12		Lockwasher, 10mm	18
13	221-AL	Front Cover Plate	1
14	230-AF	Upper Coupling Pin	1
15		Klik Pin, 11mm	1
16	233/1-AL	Coupling	1
17		Hex Screw, M-12x35	4
18		Lockwasher, 12mm	5
19		Hex Nut, 12mm	5
20		Oil Seal, (35x52x10)	1
21	250-AL	Gear, 21 Z	1
22	253-AL-40	Shaft, 40" Tiller	1
22	253-AL-50	Shaft, 50" Tiller	1
22	253-AL-60	Shaft, 60" Tiller	1
23	254-AM	Tab Washer	2
24	M-255-AM	Shaft Nut	2
25		Brg. 50x90x21.75 (30.210)	1
26		Oil Seal, (50x62x7)	1
27		Brg. 50x90x21.25 (30.207)	1
28	220-AFMD	Gasket, 1mm	-
29	M-336-AM	Gasket	1
30	257-AL-40	Flared Tube, 40" Tiller	1
30	257-AL-50	Flared Tube, 50" Tiller	1
30	257-AL-60	Flared Tube, 60" Tiller	1
31		Hex Bolt, M-10x30	4
32		Locknut, 10mm	4
33	262-AL	Spacer Washer	1
34	421-AM	Vent	1
35		Hex Bolt, M-12x105	1
36	238-AL	Tie Bar	2

ITEM NO.	PART NO.	DESCRIPTION	QTY.	ITEM NO.	PART NO.	DESCRIPTION	QTY.
1	301-AL	Plate, L.H.	1	21	319-AL	Rotor Screw	8
2	302-AL	Sprocket, 9 Z	1	22		Hex Bolt, M-10x35	4
3	303-AL	Chain	1	23		Lockwasher, 10mm	4
4		Hex Boltm M-12x55	1	24		Grease Fitting, M-10-100	1
5		Lockwasher, 12mm	9	25	330-AL	Rotor Disk	1
6		Hex Nut, 12mm	1	26	334-AL	Oil Seal Sleeve	1
7	304-AL	Chain Tensioner	1	27		Bearing, 35x72x17 (6207)	1
8		Retaining Ring, I-90	1	28		Oil Seal 42x62x6	1
9		Bearing, 40x90x23 (6308)	1	29	220-AL	Gasket	1
10		Oil Seal, 45x62x8	1	29	220-AL-1	Gasket	1
11	309-AL	Splined Rotor	1	30		Retaining Ring, E-35	1
12	254-AM	Keeper Plate	1	31		Bearing Sleeve	1
13	M-255/1-AH	Shaft Nut	1				
14	315-AL	Sprocket, 19 Z	1				
15	321-AM	Hex Bolt, 7/16" 40" Unit	48				
15	321-AM	Hex Bolt, 7/16" 50" Unit	60				
15	321-AM	Hex Bolt, 7/16" 60" Unit	72				
16		Lockwasher, 7/16" 40" unit	48				
16		Lockwasher, 7/16" 50" Unit	60				
16		Lockwasher, 7/16" 60" Unit	72				
17		Hex Nut, 7/16" 40" Unit	48				
17		Hex Nut, 7/16" 50" Unit	60				
17		Hex Nut, 7/16" 60" Unit	72				
18	317-AL	Shaft, 40" Unit	1				
18	317-AL	Shaft, 50" Unit	1				
18	317-AL	Shaft, 60" Unit	1				
19	325-AFMJ	Blade, R.H., 40" Unit	12				
19	325-AFMJ	Blade, R.H., 50" Unit	15				
19	325-AFMJ	Blade, R.H., 60" Unit	18				
20	324-AFMJ	Blade, L.H., 40" Unit	12				
20	324-AFMJ	Blade, L.H., 50" Unit	15				
20	324-AFMJ	Blade, L.H., 60" Unit	18				



ITEM NO.	PART NO.	DESCRIPTION	QTY.
1	401-AL-40	Case, 40" Unit	1
1	401-AL-50	Case, 50" Unit	1
1	401-AL-60	Case, 60" Unit	4
2		Hex Bolt, M-12x25	6
3		Lockwasher, 12mm	6
4		Hex Nut, 12mm	1
5	402-AL-40	Hinge Pin, 40" Unit	1
5	402-AL-50	Hinge Pin, 50" Unit	1
5	402-AL-60	Hinge Pin, 60" Unit	1
6	403-AL-40	Rear Board, 40" Unit	1
6	403-AL-50	Rear Board, 50" Unit	1
6	403-AL-60	Rear Board, 60" Unit	1
7		Hex Bolt, M-10x25	2
8		Lockwasher, 10mm	2
9		Hex Nut, 10mm	2
10	414-AL	Runner	2
11		Hex Bolt, M-12x90	2
12	415-AL	Gasket	1
13	416-AL	Cover Plate	1
14		Hex Bolt, M-8x20	12
15		Hex Bolt, M-8x25	4
16		Lockwasher, 8mm	16
17		Hex Nut, M-8	16
18	417-AM	Plug, 3/8" Gas	2
19	417/1-AM	Plug, 3/8" Gas	1
20		O-ring 622.710	3
21		Hex Bolt, M-14x90	1
22		Locknut, 14mm	1
23		Chain	1
24		Flatwasher, 16mm	2
25		Cotter Pin, 3x30	2
26	423-AF	Rack	2
27		Hex Bolt, M-12x35	2
28		Wilk Pin, 11mm	2
29		Hex Bolt, M-12x50	2
30		Ring	2
31	427-AL	Locknut, 12mm	2
32	421-AM	Vent	1
33		Hex Bolt, M-16x70	4
34		Lockwasher, 16mm	4
35		Hex Nut, M-16	4
36	371-AH	Bracket	2
37	348-AH	Clamp	2
38	378-AH	Pin	2

HOW TO ORDER PARTS

Please be sure to furnish the quantity, part number, and name of each part wanted. It is also important to give the Serial Number of the machine for which the parts are intended. It is suggested that the Serial Number of the machine be written in the space below so that it will be readily available when you need it.

THIS PARTS BOOK IS FOR
MACHINE SERIAL NUMBER

To insure prompt delivery, please furnish the correct name of the consignee, as well as the street address, town, county, state, and zip code to which the parts are to be shipped, and indicate whether shipment is to be by freight, express, parcel post, or by other means.

ONLY AGRIC PARTS GIVE
AGRIC PERFORMANCE

The same quality and craftsmanship that have made AGRIC products famous throughout the world are built into all AGRIC replacement parts.

WORLD AGRITECH CORPORATION

The International Line Of Machinery
2896 SR. 232 Bethel, Oh. 45106
(513) 734-4317 Fax (513) 734-3536